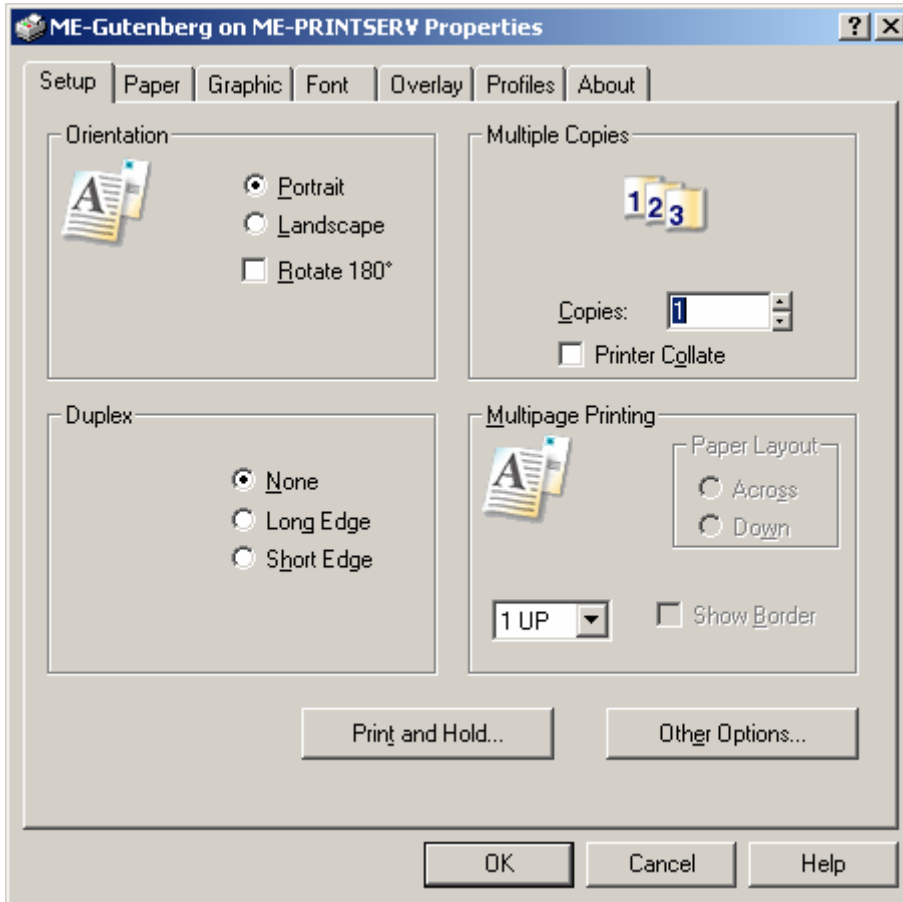


Duplex Printing on LRC Printers

This tutorial is for LRC users wishing to print on both sides of a sheet.

Open the document you want to print. Click on File > Print > Properties

This should open a window like the one below.



Depending on your preference either select **Long Edge** or **Short Edge** under the Duplex options. An explanation about Long Edge and Short Edge is given below.

Click OK. Click OK again and the document will print.

Using the duplex function

Using Duplex Bind

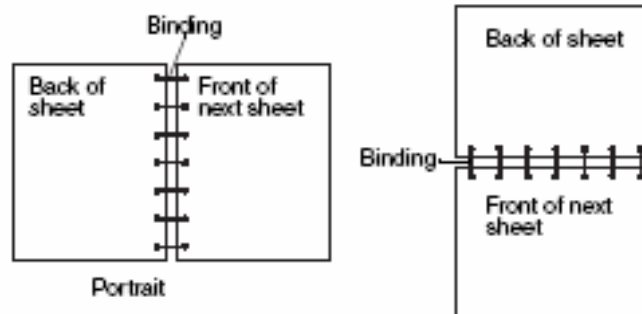
When you select duplex bind printing in the printer driver or Duplex Bind in the Finishing Settings in the Local Printer Setup Utility, you must select either long edge or short edge binding, which are the values for this setting. The purpose of Duplex Bind is to define the way duplexed pages are bound, and how the printing on the back of the sheet (even-numbered pages) is oriented in relation to the printing on the front (odd-numbered pages).

The two values for Duplex Bind are:

Long Edge*

The asterisk (*) indicates this is the factory default setting

Assumes binding along the long end of the page (left edge for portrait orientation and top edge for landscape orientation). The following illustration shows long-edge binding for portrait and landscape pages:



Short Edge

Assumes binding along the short edge of the page (top edge for portrait orientation and left edge for landscape orientation). The following illustration shows short-edge binding for portrait and landscape pages:

